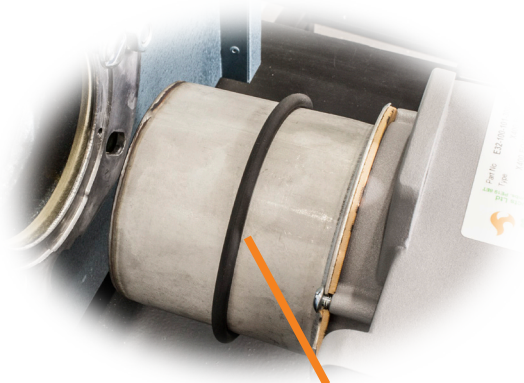


# IMPORTANT - PLEASE READ THIS FIRST

## Quick start guide for X-Series burners

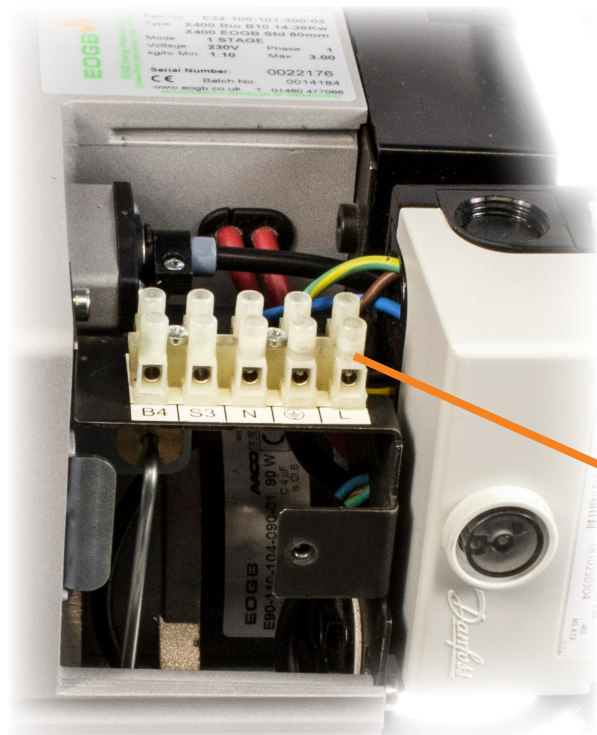
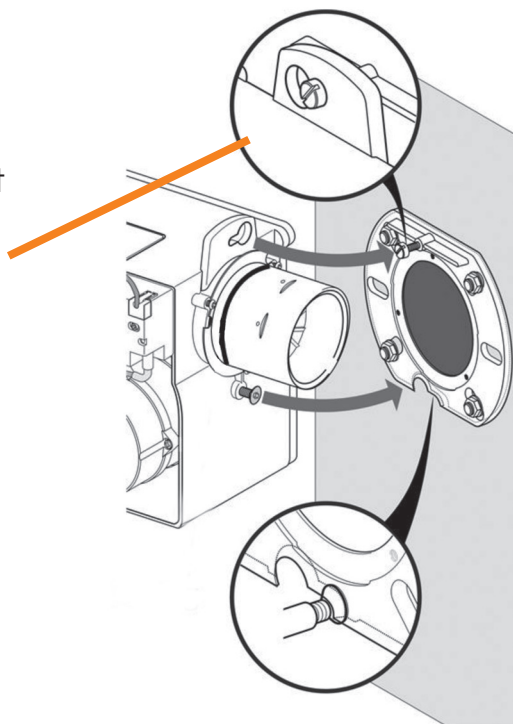
**Note: this is a quick guide listing key points and in no way replaces the need to read the installation instructions.**

- 1 - Install mounting flange onto the boiler/application ensuring that the **gasket** is fitted between plate and chamber.



- 2 - Ensure that the supplied black 'O' ring is fitted to the blast tube.

- 3 - Insert the burner into the mounting flange ensuring that it is located over the stud. Then twist burner into upright position and tighten the fixing screw.



- 4 - Remove cover plate to left of control box for access to wiring connections (cover shown removed in picture). Install wiring as per wiring diagram found in the burner manufacturer's instructions.

- 5 - Connect oil flexible and check for leaks.

- 6 - Commission as per manufacturer's instructions.

# X-Series Air Dampers & Intake Options

The X400 & X500 are supplied with both LOW and HIGH output air dampers loosely within the box and the correct one must be selected and fitted prior to installing the burner.

If the **X400** burner output is between **14 to 25kW**s, the **LOW** output damper must be used

If the **X400** burner output is between **25 to 36kW**s, the **HIGH** output damper must be used

If the **X500** burner output is between **34 to 40kW**s, the **LOW** output damper must be used

If the **X500** burner output is between **40 to 62kW**s, the **HIGH** output damper must be used



Low output damper



High output damper

Both X400 & X500 air intakes are **not** fitted to the burner when supplied. The correct one must be selected, then fitted to the burner.

The narrow intake version (X400 model only) can be fitted on appliances that require a slimmer fitting burner.



Narrow Intake (X400)

The round intake version (X400/X500 models) allows for an optional balanced flue ducting to connect the burners air intake (if required).

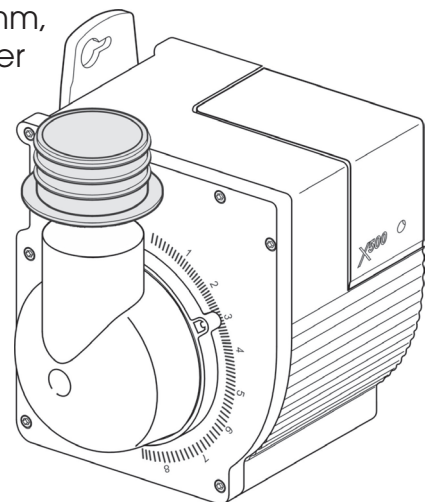


Round Intake X400/500

Please ensure that the acoustic foam baffle is fitted in the correct orientation (see picture).

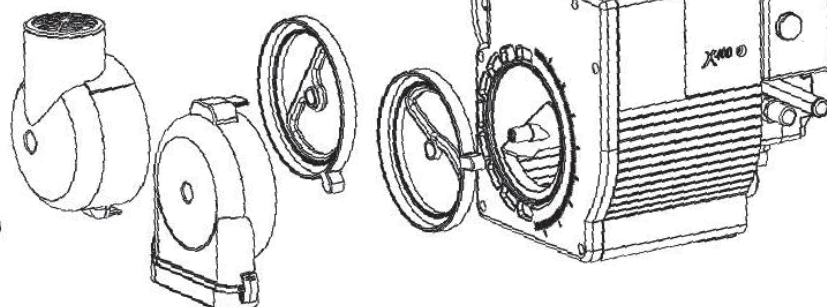


Also included in this kit is a rubber adaptor which will convert the 60mm air intake fitting to 70mm, simply place the adaptor over the air intake to fit.



To assemble the air intake and air damper, screw the spring loaded securing screw (see "A" diagram below) through the chosen intake and air damper into the burner side cover

**Screw "A" MUST NOT be overtightened which would prevent the air damper from being adjusted during the commissioning.**



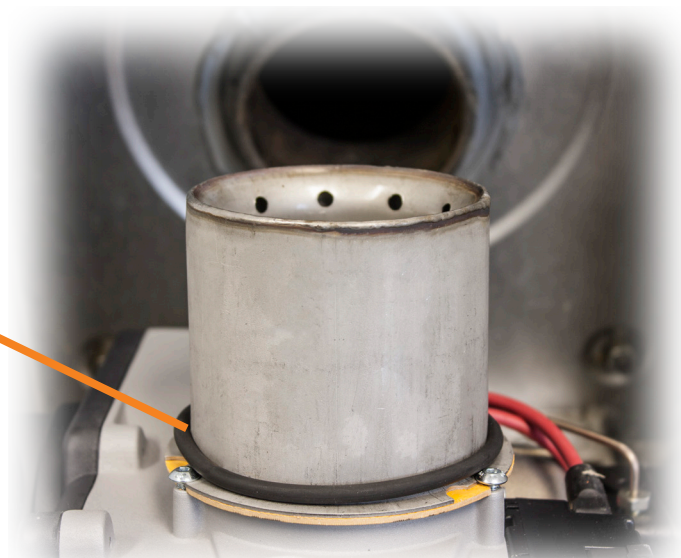


# The following two pages should be used when fitting the X-Series burner to the **WORCESTER HEATSLAVE** or **DANESMORE** BOILERS

**Note: this is a quick guide listing key points and in no way replaces the need to read the installation instructions.**

When fitting an X-Series burner to a Worcester Heatslave or Danesmore boiler, please follow these quick steps for the correct installation.

- 1 - When mounting the X-Series burner ensure that the "O" ring sealing gasket that is supplied in the burner's accessory pack is fitted over the burners blast tube.



- 2 - The standard mounting flange and gasket supplied with the burner are not required and can be discarded. When mounting the burner to the boiler, simply push the burner blast tube into the boilers pre-fabricated mounting support.

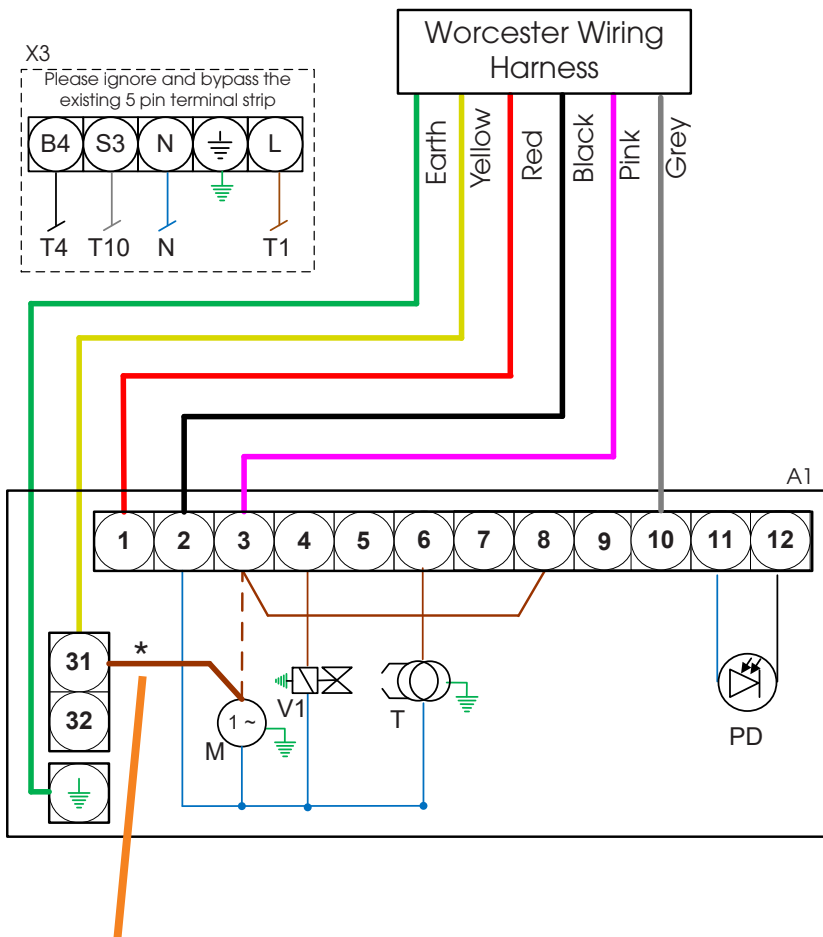
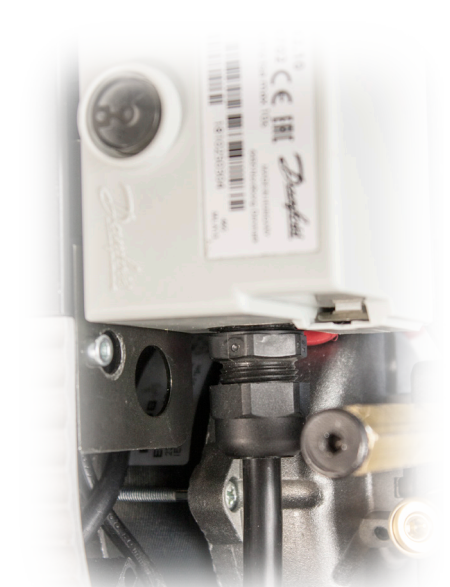
- 3 - Ensure the burner is pushed all the way up to the "O" ring sealing gasket, then fasten the two securing bolts down onto the blast tube.



## Once the X-Series burner has been mounted correctly address the wiring

- 4** - Before the boiler wiring is connected, ensure that the additional cable gland that is supplied in the accessory pack is fitted.

This cable gland can be mounted on the top or bottom of the control box wiring base as shown.



\* Remove the motor live brown wire from terminal 3 (Leave link wire) and fit into terminal 31 with the yellow wire from the Worcester.

- 5** - When wiring the burner up follow these instructions.

**IMPORTANT** - Ignore & bypass the 5 pin terminal strip (X3) and wire directly into the control box wiring base (A1).

Wire as per wiring diagram.  
 Grey to Terminal 10  
 Earth to Earth Terminal  
 Black to Terminal 2 (Neutral)  
 Red to Terminal 1 (Live)  
 Pink to Terminal 3  
 Yellow to Terminal 31 \*

**KEY**  
 X3 - 5 Pin Terminal strip  
 A1 - Control box wiring base  
 PD - Photodiode  
 T - Transformer  
 V1 - Solenoid Valve  
 M - Motor

- 6** - Connect oil flexible and check for leaks.

- 7** - Commission as per manufacturer's instructions.