



Reliable energy. Flexible approach.

Conversion Instructions

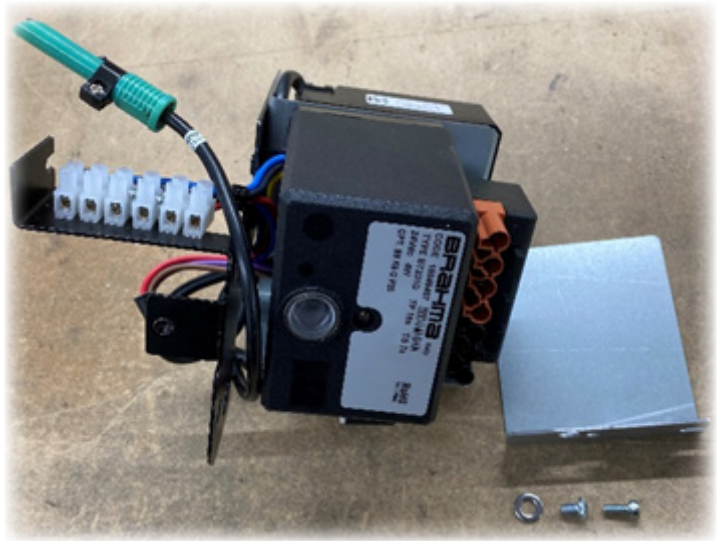
Honeywell DKO992 24v/EOGB24.01/02 to Brahma BT231O 12v DC and 24v DC Conversion Kits



Kit Contents and Tools Needed

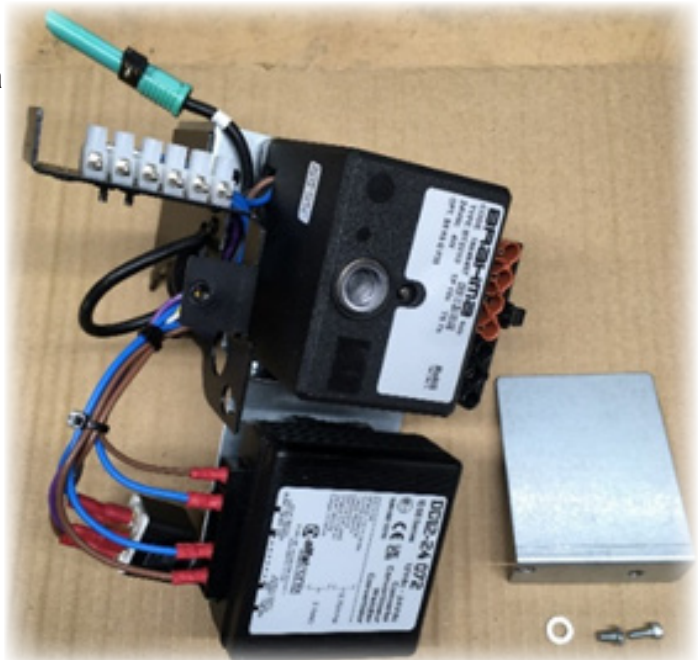
X400 24v and X500 24v Kit Contents

- 1 x Preassembled electrical harness
- 1 x Heatshield Bracket
- 1 x Washer
- 1 x M4 x 10 cap head screw
- 1 x M5 x 8 button head screw.



X400 12v and X500 12v Kit Contents

- 1 x Preassembled electrical harness with a 12v converter
- 1 x Heatshield Bracket
- 1 x Washer
- 1 x M4 x 10 cap head screw
- 1 x M5 x 8 button head screw.



Tools Needed

- 3mm Allen key
- 2.5mm Allen key
- Round Circular File or a 9mm Drill Bit (May not be needed)

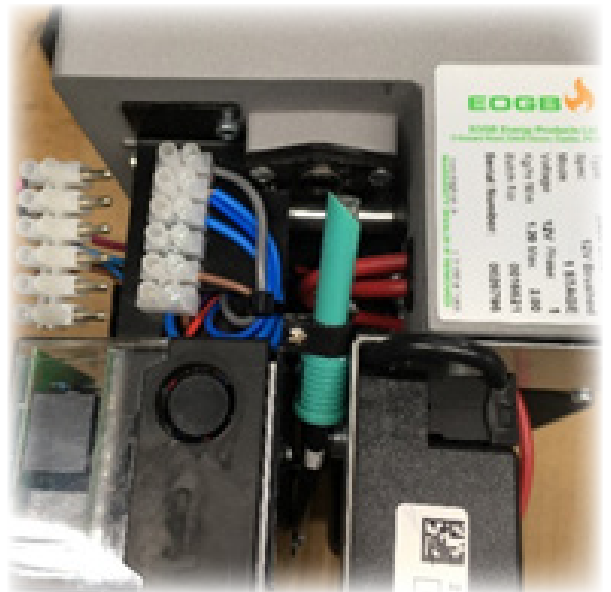
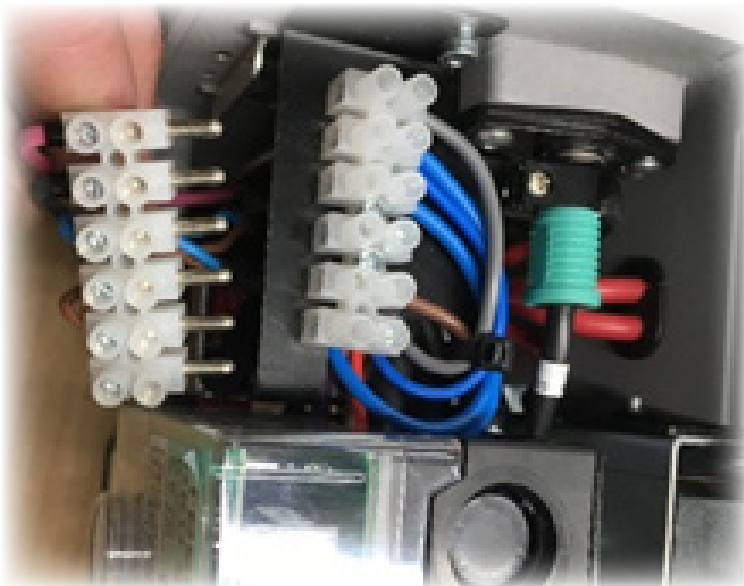
Instructions

Please follow these steps for converting the old DKO992 wiring harness over to the replacement Brahma BT2310 version. Please note some images are for demonstration purposes and may differ to the conversion kit you are fitting.

1. Remove electrical cover as below



2. Pull 6 pin connector plug apart & remove photocell from burner



Instructions

3. Unplug HT leads from the transformer

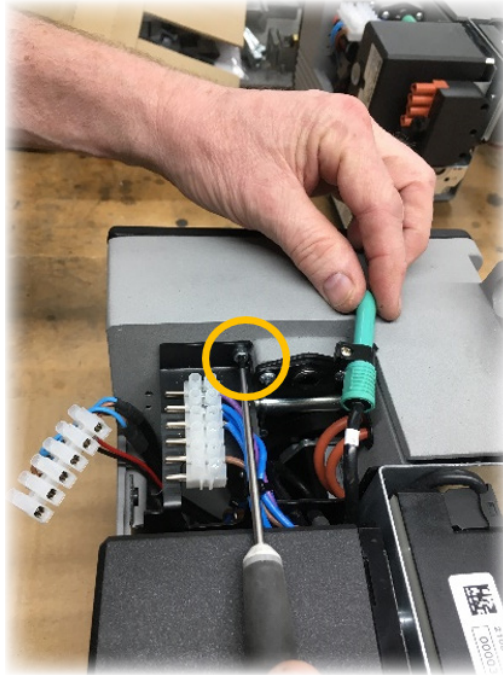


4. Remove M4 x 6 Caphead on burner as shown below. (Please note that you will be replacing this M4 x 6 Cap head screw with new longer one.)



Instructions

5. Loosen the 2 remaining screws, but do not remove completely remove.

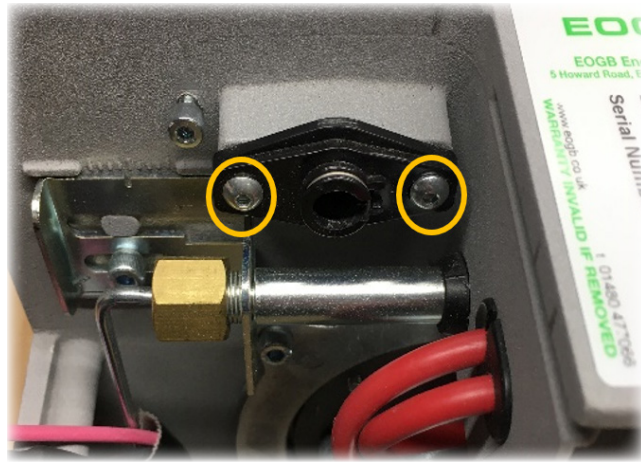


6. Remove the wiring harness as shown.



Instructions

7. "NOTE" On some older burner versions, you may have to change the photocell flange and/or file/drill out the casting hole to allow the new photocell to fit. If so, just remove the 2 button head screws. File out or drill out using 9mm drill bit the casting hole, then replace with new photocell flange using the existing 2 x Button head screws.

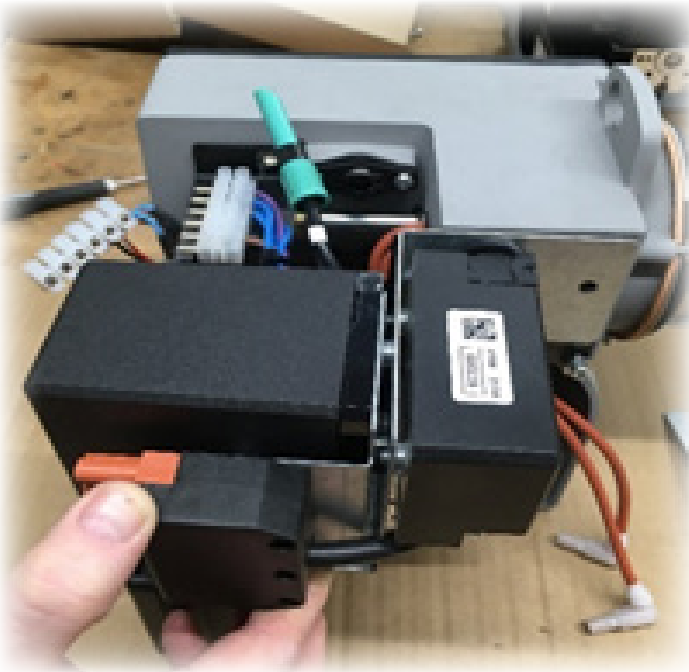


8. Using the supplied washer & M4 x 10 cap head screw, fit into casting as shown but leave loose.

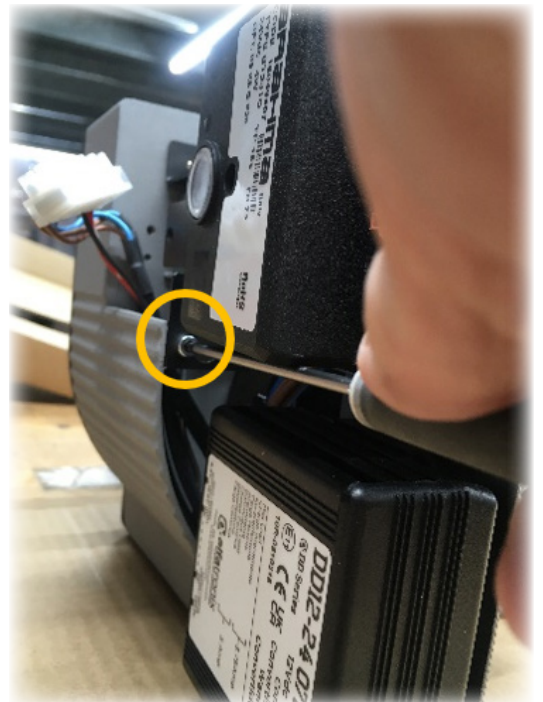
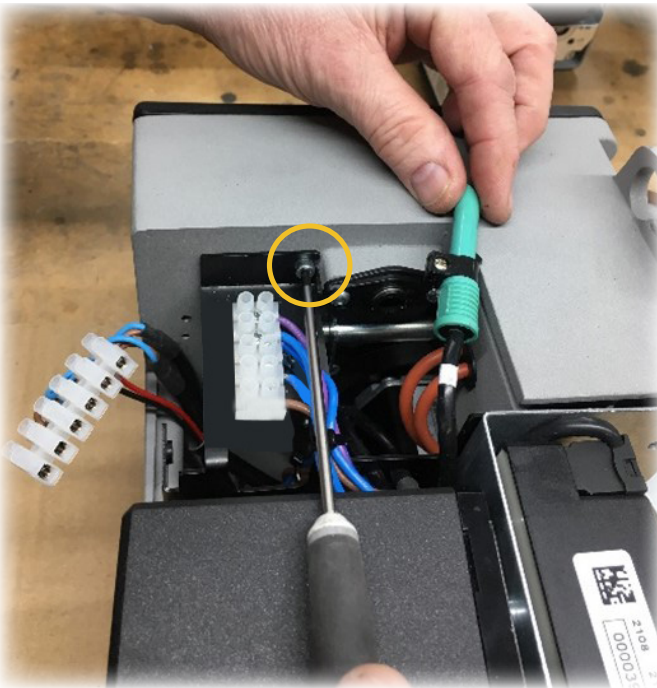


Instructions

9. Slide the new harness into position, making sure the washer sits on outside of the black chassis.

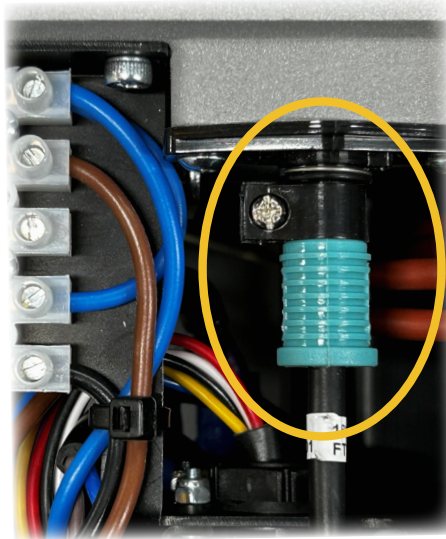


10. Secure the 2 x M4 Caphead screws as shown below.



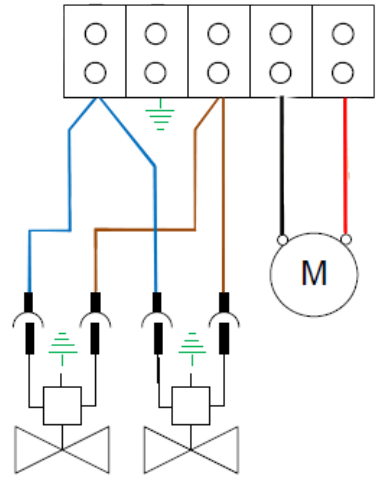
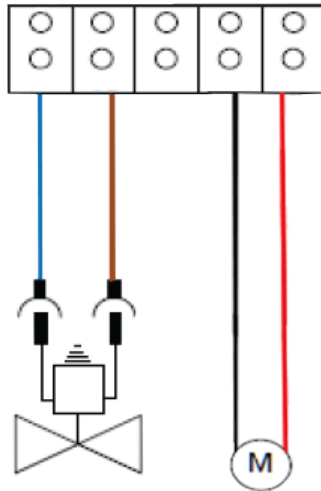
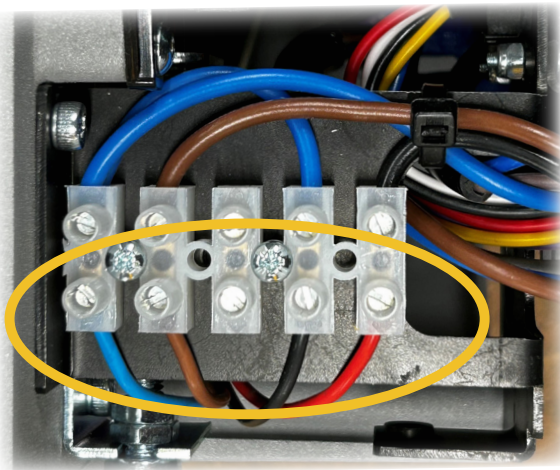
Instructions

11. Refit the photocell into burner

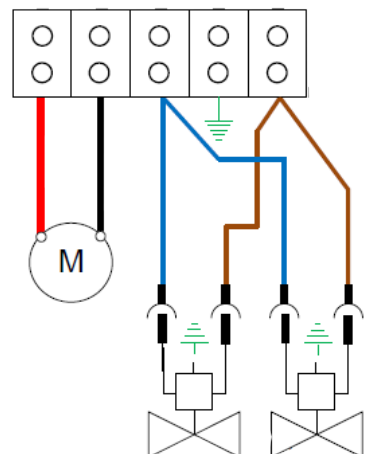
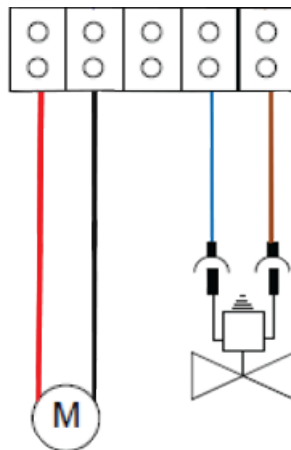
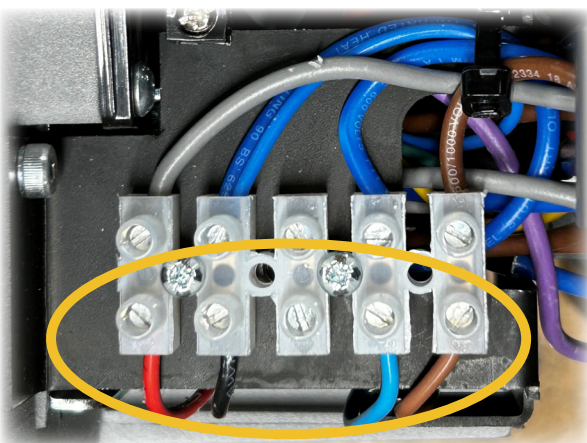


12. Disconnect the wiring connections from the old 6 pin terminal strip and rewire the 5 pin terminal strip to the correct wiring diagrams below

X-Series 24v DC (1 or 2 Solenoid Versions)



X-Series 12v DC (1 or 2 Solenoid Versions)

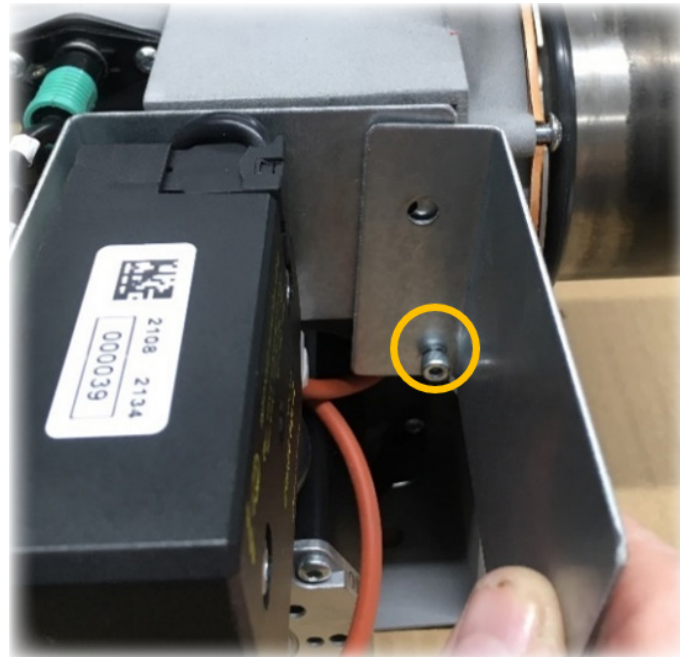


Instructions

13. Re-connect the HT Leads to transformer. (Note, Transformer type may differ)

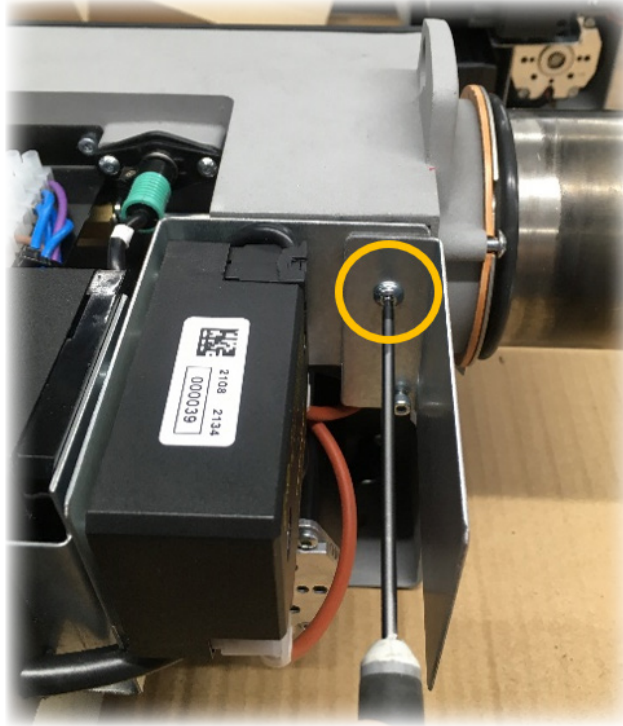


14. Fit the heatshield bracket over the M4 x 10 Caphead head making sure the washer stays behind plate.

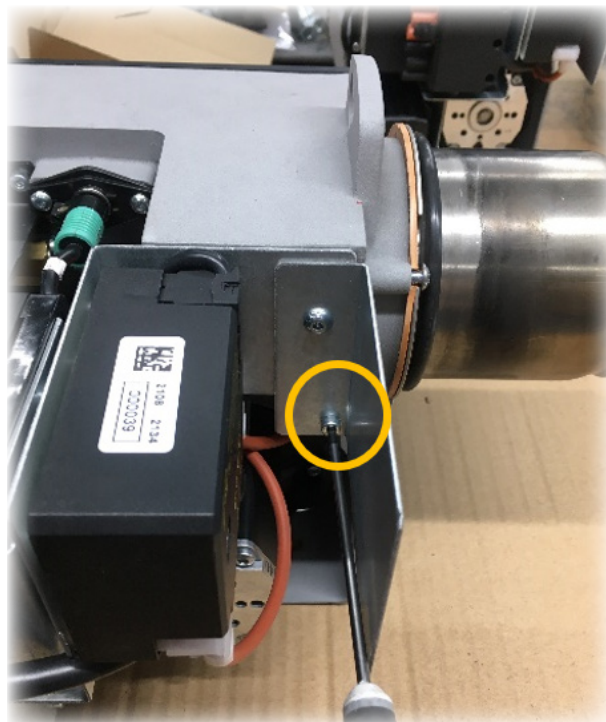


Instructions

15. Fit the supplied M5 x 8 button head screw as shown and tighten.

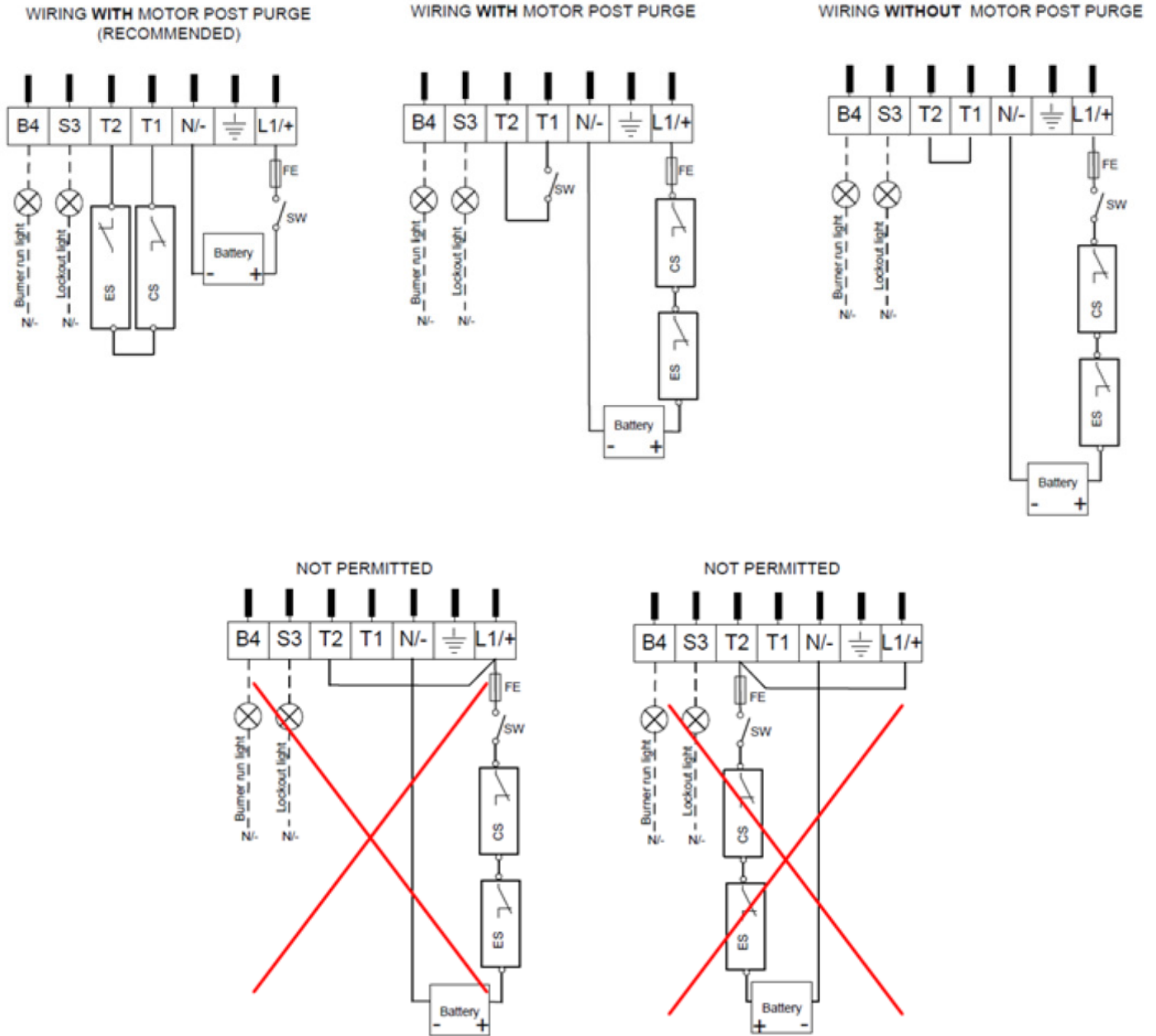


16. Tighten the M4 x 10 Caphead



Instructions

17. IMPORTANT WIRING – Please check that the external wiring to the burner conforms with the below permitted drawings.



| Key | |
|------|---|
| L1/+ | Battery Positive Supply (12v or 24v DC Depending on burner model) |
| N | Battery Negative Supply(12v or 24v DC Depending on burner model) |
| T1 | Burner Output Run Signal (24v DC Negative) |
| T2 | Burner Input Run Signal (24v DC Negative) |
| S3 | Burner lockout signal (24v DC Positive) Optional |
| B4 | Burner run signal (24v DC Positive) Optional |
| FE | External Fuse (16 Amp) |
| SW | On/Off Switch (Not supplied on burner) |
| CS | Safety Control Thermostat |
| ES | Safety Engine Run Stat |



EOGB Energy Products Ltd, 5 Howard Road, Eaton Socon, St Neots, Cambridgeshire PE19 8ET

Tel: 01480 477066 Fax: 01480 477022 Email: sales@eogb.co.uk www.eogb.co.uk



www.youtube.com/EOGBenergyproducts



[@EOGBburners](https://twitter.com/EOGBburners)